

ABOUT US

We're an online review dedicated to new urban residential development, design and living. Read more...

SPOTLIGHT

Penthouses

40 Mercer

15 CPW

40 Bond

1 York

The High Line

CONTENTS

Main

New & Noteworthy

Living Spaces

Kitchen & Bath

Fit & Finish

Home Tech

Books

Looking Glass

EXPLORE

Market Resources

Design Resources

Curbed.com

Other Sites We Like

MORTGAGE CENTER

Mortgage Glossary

ARCHIVES

March 2007

« 520 West Chelsea - 520 West 19th Street | Main

100 11th Avenue - Jean Nouvel



New details of Jean Nouvel's design for a condo tower on Manhattan's far west side (opposite Frank Gehry's IAC headquarters, no less) have just been unveiled to the press. The cluster of new development near the High Line in the West Chelsea gallery district has been among the most ambitious in terms of design. Here we go inside to look at Nouvel's solution for a corner site on the river, where light and open views for 72 apartments are reflected and refracted through a mosaic of glass panels arrayed like a crowded Mondrian painting. Above is an interior view. After the jump some interesting detail you may not have read about yet.



The 23 story apartment tower located at the corner of 19th Street and the West Side Highway will gently curve the length of the street frontage--opening both south and west vistas to most of the 72 condominiums contained within. The curtain wall will be made up of nearly 1700 different-sized panes of glass (see detail below). These windowpanes will have slightly differing degrees of transparency, and will be set at varying angles creating a textured pattern almost like leaves of ivy on a wall. They will reflect light in countless ways as the day changes. Mechanized shades custom designed by Nouvel will allow residents to control the flow of natural light.

The building's elevator shafts will have random punched windows along the north facade that will not only allow

AD LINKS

Ads by Google

[New York Loft](#)

[Manhattan Loft](#)

[Downtown Lofts](#)

[Locations NYC](#)

ADS

Ads by Goooooogle

Bubble in NYC?

Should that SoHo 1BR cost \$2M? An NYC analysis of home purchasing.
www.housemath.us/nyc

110 Central Park South

Rare opportunity to own on the park Luxury living, legendary address
www.110cps.com

Manhattan Apartments

CityRealty is the leading site for New York City real estate
www.CityRealty.com

Apartment In Manhattan

Top 6 Websites For Apartment In Manhattan
www.Top6picks.com

Manhattan Condo \$500K

Financial District-Downtown Tribeca Prvt Show- 646-281-9811
www.enclaveny.com

Advertise on this site

..

Ads by Goooooogle

December 2006

August 2006

July 2006

June 2006

May 2006

April 2006

March 2006

February 2006

January 2006

CONTACT

Email us

Search this site:

Search

Subscribe to this blog's feed



passengers to view the city as they ascend, but also, viewed from the outside, give off a twinkling light pattern as the elevators move.

Nouvel is working in conjunction with New York based firm Beyer Blinder Belle.

Interiors will follow a pale palette of colors, with terrazzo flooring and highly-finished plaster walls. Pocket doors and large pivoting doors will allow for flexible use of apartment spaces.

Apartments will include one-, two-, and three-bedroom units, as well as five penthouses. The tower's top floor will be a single unit with outdoor spaces.

Nouvel calls the building a "Vision Machine" for the way in which residents will be able to view the city and the Hudson River. But it will also be a two-way device, acting as a kind of looking glass back in at what West Chelsea has become, and maybe where it's headed.

Below is a detail of the curtain wall windowpane system.

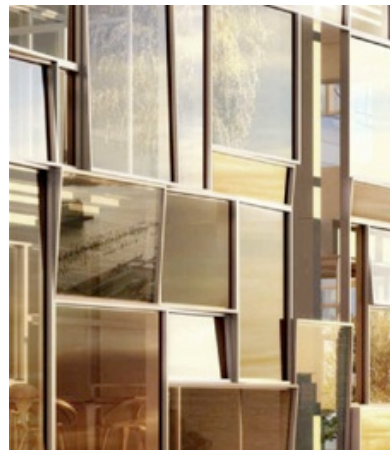
Image credits:

(view of bldg. main façade): Copyright ArchPartners 2007

(detail of curtain wall): Copyright dbox 2007/www.dbox.com

(interior looking out at Hudson): Courtesy Ateliers Jean Nouvel 2007

NouvelChelsea.com



[Ads by Goooooogle](#)

[Advertise on this site](#)

[Condos by Gwathmey Siegel](#)

19th St. & Park Avenue, 1-3 Bedroom Custom
Designed From \$1.2 Million
www.240pas.com

[Super Lux 995 Fifth Ave.](#)

Half and Full Floors. On Fifth Ave. Overlooking
Central Park. From \$10M
www.995fifthave.com

Return to Triple Mint main page

Posted by Triple Mint in New & Noteworthy | [Permalink](#)

TrackBack

TrackBack URL for this entry:

<http://www.typepad.com/t/trackback/247346/17321210>

[Apartment In Manhattan](#)

Top 6 Websites For Apartment In Manhattan
www.Top6picks.com

[Luxury Condo-Investment](#)

Manhattan
Condos-Starts \$500's Prvt Show-646-281-9811
www.enclaveny.com

[Apartments Rentals NYC](#)

Huge Selection of rentals in NYC
search our large data listings free
www.kvny.com

[Welcome Home UWS](#)

Upper West Side Specialists Never pay 15% over 1000 listings
[www.welcomehomeuws.c](http://www.welcomehomeuws.com)

[Advertise on this site](#)

Listed below are links to weblogs that reference 100 11th Avenue - Jean
Nouvel: